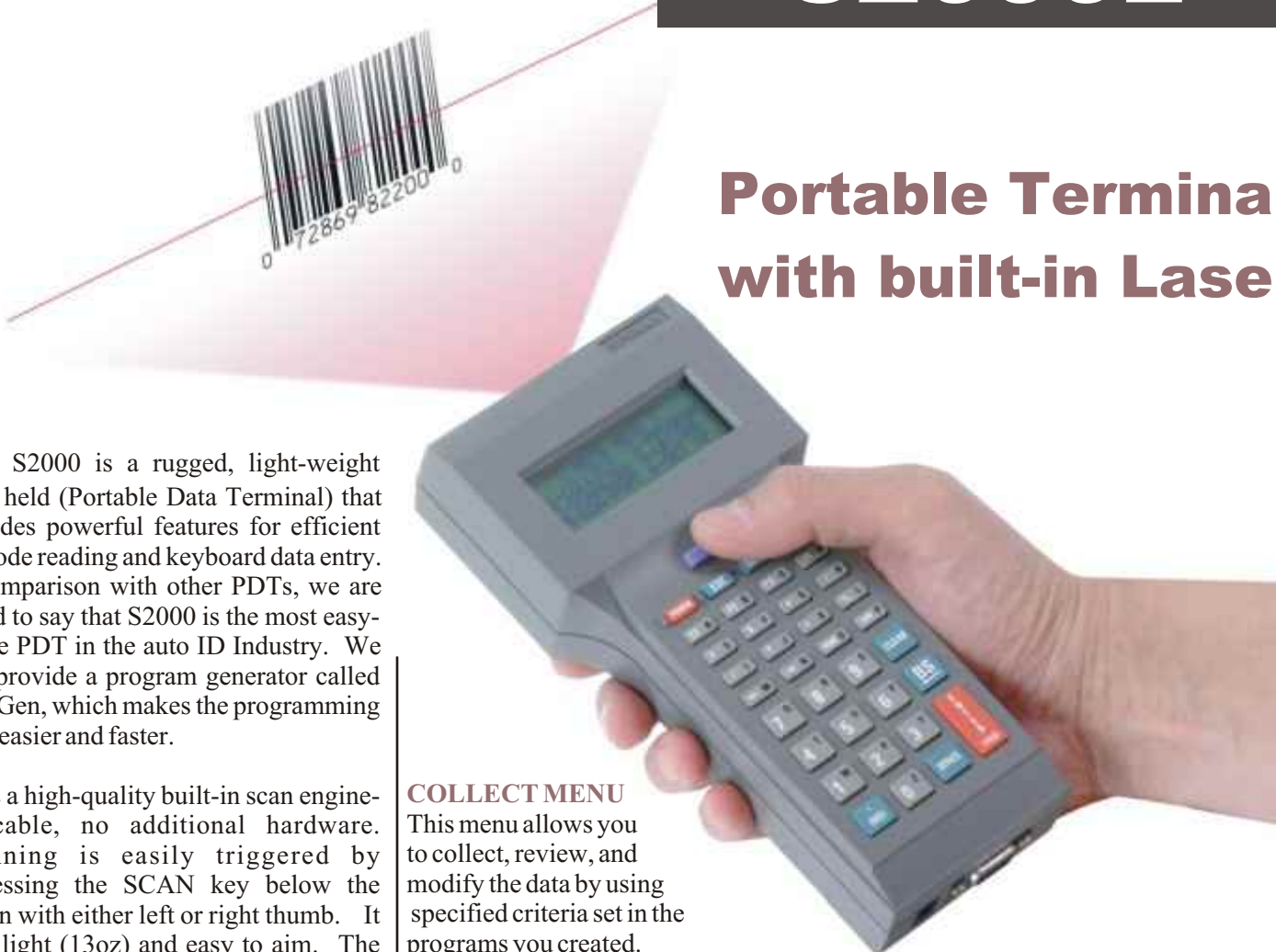


Sun Max

S2000L

Portable Terminal with built-in Laser



The S2000 is a rugged, light-weight hand held (Portable Data Terminal) that provides powerful features for efficient bar code reading and keyboard data entry. In comparison with other PDTs, we are proud to say that S2000 is the most easy-to-use PDT in the auto ID Industry. We also provide a program generator called EasyGen, which makes the programming even easier and faster.

It has a high-quality built-in scan engine—no cable, no additional hardware. Scanning is easily triggered by depressing the SCAN key below the screen with either left or right thumb. It is so light (13oz) and easy to aim. The depth of field is 5 - 30”.

MENU-DRIVEN OPERATION

The S2000 has a 4 x 20 LCD display and a 35-key alpha-numeric keypad, which allows for a fully menu-driven operation. The Main Menu is comprised of six Menus:

PROGRAM MENU

In this menu, you may create up to 4 programs for data collection and/or storing data file. Each program can have up to 24 statements or prompt texts.

COLLECT MENU

This menu allows you to collect, review, and modify the data by using specified criteria set in the programs you created.

COLLECT MENU

This menu allows you to collect, review, and modify the data by using specified criteria set in the programs you created.

UPLOAD MENU

After data is collected, this menu is used to upload the data to your computer.

SET UP MENU

In this menu, your data collection environment is defined. For example, the type of bar code symbology and computer interface are set up here.

DOWNLOAD MENU

When using the EasyGen program generator to configure and program, this menu allows you to download the information from your PC to the S2000

NON-PORT MENU

This menu allows you to use the

S2000 as a fixed reader for applications that require stationary scanning.

Easy to Configure and Program

There are two methods of configuring and programming the S2000. The first method uses the keypad to operate the reader's menu-driven setup utility for easy configuration, and the built-in program generator to generate up to four programs. The second method uses an optional program generator EasyGen, which allows the configuration and programs to be downloaded from the PC to the S2000.

Upload the Data Directly To Your Application or a Data File

The method used to upload data to your computer's application is a very important factor in determining a data collector's ease of use. With its uniquely designed upload method, the S2000 allows control codes and delays to be inserted into your collected data's sequence, so as to match the input sequence of your application. Using this method allows the data to be uploaded directly to your application via the keyboard or USB port (a Keyboard to USB adapter is required). Or, using the COM2200 utility allows the collected data to be uploaded to an ASCII data file.

Download Data Files

Up to four ASCII data files can be downloaded to the S2000 from your computer via the RS-232 port. Then, you may use the data files to perform the data verification, table look up, pick list, and even simple data base application.

Printer Support

S2000 supports most of the RS-232 interfaced printers to generate labels, tickets or receipts. You may configure the printer control command by using the EasyGen program generator utility.

Modem Support

You may also attach an external MODEM to the S2000 and upload the data via the telephone line.

Multiple Power Source

The S2000 can be operated with 3 AA batteries for portable operation, or with an external power adapter when used as a fixed reader.

Long Battery Life

3 AA Alkaline batteries can give you approximately 50,000 scans. That's nearly 20 hours of continuous use. In addition, a lithium battery will maintain data and programs for years.

To Operate By Sending Control Code to the RS-232 Port

User may operate the S2000 by sending control codes to the RS-232 port instead of pressing keypad. The control code is the key code with the most significant bit set.

Advanced Features

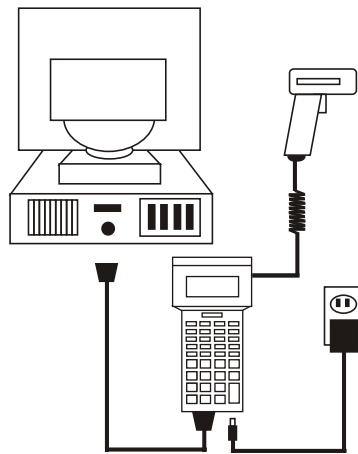
With EasyGen program generator, you may define up to 4 variables. There are three ways to define a variable: (1) define as a constant, (2) store the input data in a variable, and (3) get an item from a data file and store it in a variable. And you may program the S2000 to perform calculations and comparison on these variables. You may also design your own Menus to replace the Main, Collect or Upload Menus.

S2000 can be easily configured to drive a RS-232 serial printer to generate labels, tickets or receipts.



PC COM Port Attachment

The S2000 can be attached to the PC COM port. When using the **EasyGen** or **COM-2200** uploading utility, this attachment is required.



Physical Specification

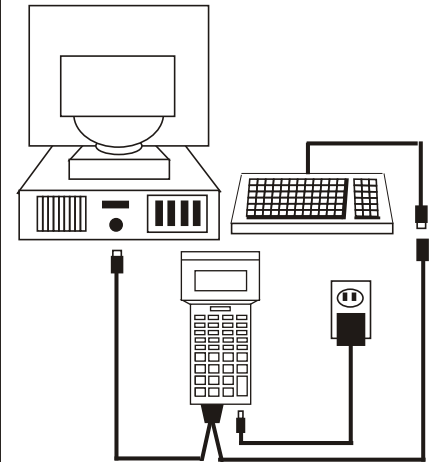
Length: 7.2 inch
Width: 2.6 inch(hand grip) 3.5 inch(display)
Depth: 1.35 inch(hand grip) 1.55 inch (display)

Multiple Interface

S2000 provides both keyboard and RS-232 interfaces which allows you to easily upload data to the computer. There are three types of attachment to the computer:

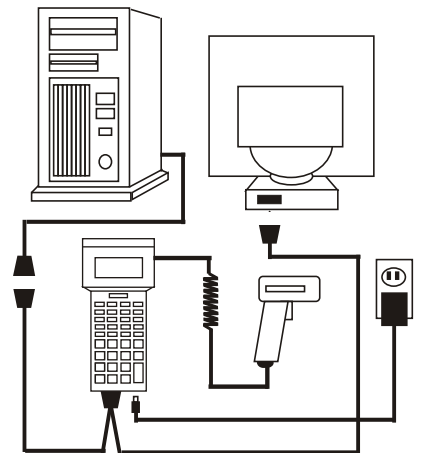
Keyboard Wedge Attachment

It can be attached between the keyboard and the main unit of you PC. It sends data to the computer as if it was typed in from the keyboard



RS-232 Serial Wedge Attachment

S2000 can be attached in-line between the host computer and terminal. It sends data to the host computer and terminal as if it was typed in from the terminal's keyboard.



Sun Max Corp.

9698 Telstar Ave. #303 El Monte, CA 91731

Tel: 626-401-1901 Fax: 626-401-1906

www.sunmax.com



S2000QS Piggyback laser PDT

For gun grip scanning, the S2000 is available in the piggyback laser version. The S2000 is securely mounted on top of a PSC-6000 scanner with a holder shaped exactly as the PSC-6000. A 14" cable is provided to connect the PSC-6000 scanner and S2000. This package is very similar to those PDT's with an integrated laser gun, but the cost is less than half of the comparable products.



Carrying Case

We offer two kinds of carrying case, a leather one and a vinyl one. The vinyl case comes with shoulder stripe and the leather case comes with a hand stripe which allows you to wear it on your hand or belt.

S2000M

It comes with a built-in dual track (track 1 and 2) magstripe reader. It can be configured to read single or dual track.

It can be used to keep magstripe data, for example time attendance, member ship record. With a portable printer, then you have a mobile POS station. You can input order, keep credit card record, and print a receipt.



S2000S

It comes with a built-in slot badge reader to read bar code badge.



Batt Rechargeable Ni-HM batteries and Charger

S2000 series PDT's use 3 standard AA size batteries. We offer the popular Ni-HM rechargeable batteries and the fast charger. It takes about 5 hours to be fully charged. Once they are fully charged, they can power the S2000L for about 15000 scans.



S2000

It is a plain model with no built-in scanner. It is good for applications which don't require bar code input or use external scanners such as Wand, CCD, or Laser.

EasyGen

Program Generator for S2000

The EasyGen is a Window based program. It is used as an alternative method to create the programs, and to configure the setup on your PC. Then, you can download them to the S2000. You may also download data files to the S2000, then use them as look up tables or pick lists.

EasyGen consists of five menus:

1) File Menu

In the File Menu, you may do the following:

- New:** Clear the current setup and programs, and start a new one.
- Open:** Open an existing data file and load the setup, programs from the data file.
- Save:** Save the current setup and programs to a data file
- Exit:** Exit the EasyGen.

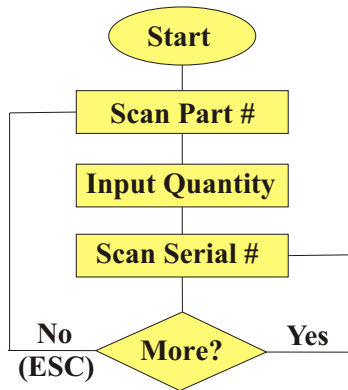
2) Setup Menu

In the Setup Menu, you may configure the S2000 from the following selections:

- Default Setup
- Bar Code
- Computer interface
- RS-232 Parameter
- Date & Time
- Shut Down Time
- EOF(End of File String)
- Function Keys
- User Defined Menus
- Printer Control Code

3) Programming Menu

In the Programming Menu, you may create up to 4 programs and partition the memory for each program. To create a program, first draw the flow chart of your task, then convert it to the program. For example, we have a flow chart for an inventory task as follows:



To convert the above flow chart into a program, simply fill in the following table with the Prompt Text, the criteria for each input data and Upload Prefix & Suffix.

Stmt No	Ent Type	Prompt Text	Data ID	Data Type	Max Char	Min Char	Input K/B	Yes/ Next	No/ Esc	Upload Prefix	Upload Suffix
1	D	Scan Part #			12	12	B	02	00		,
2	D	Input Quantity		N	05	01	K	03	00		!^D
3	D	Scan Serial #			12	10	B	03	01		!^D
4	D										
5	D										

!^D represents a Carriage Return

4) Download Menu

In the Download Menu, you may download the setup, programs, user-defined menus, and the printer control code to the S2000.

5) Download Data File Menu

Up to 4 ASCII data files can be downloaded to the S2000. Then, you may use the data file to perform the data entry verification, table look up, and pick list.

Advanced Features

With EasyGen, you may define up to 4 variables. There are three ways to define a variable:

1. Define as a constant
2. Store the input data in a variable
3. Get an item from a data file and store it in a variable.

You may also program the S2000 to perform calculation, comparisons or to display these variables.