

## Pole Displays

## Pole Displays

Pole displays come with a **Y-CABLE** and a **POWER SUPPLY**. One end of the cable is a **FEMALE DIN CONNECTOR** that connects directly to the **POLE DISPLAY**. The other end of the cable is either a **FEMALE 25-PIN** (serial connection) or **MALE 25-PIN** (parallel connection). Attach the pole display to a **COM** port or a **PARALLEL** port, making note as to which port you are connecting the pole display to. Attach the remaining end of the **Y-CABLE** to the **POWER SUPPLY**.

**Note:** If only **9-PIN** ports are available on the PC and the pole display is a **25-PIN** then a **DB25M/DB9F** adaptor needs to be attached to the pole display's **Y-CABLE** in order to fit the PC. Make sure that in the **PS.bat** there is the following statement: **SET PSPOLE=YES**.

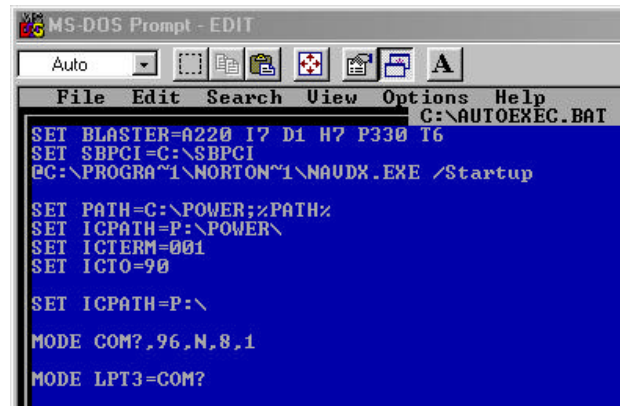
## Pole Displays DOS Operation

### SERIAL INTERFACE:

1. From the **DOS PROMPT, C:\** type the following statement:

#### EDIT AUTOEXEC.BAT

Then press **<ENTER>**. This will open up the autoexec.bat file for editing.



```
MS-DOS Prompt - EDIT
Auto
File Edit Search View Options Help
C:\AUTOEXEC.BAT
SET BLASTER=A220 I7 D1 H7 P330 T6
SET SBPCI=C:\SBPCI
@C:\PROGRAM~1\NORTON~1\NAUDX.EXE /Startup
SET PATH=C:\POWER;XPATHX
SET ICPATH=P:\POWER\
SET ICTERM=001
SET ICTO=90
SET ICPATH=P:\
MODE COM?,96,N,8,1
MODE LPT3=COM?
```

2. Type the following statements:

**MODE COM?,96,N,8,1**

(Where the ? is the COM port number that your pole display is connected to: i.e. 1,2,3 or 4)

**MODE LPT3:=COM?**

(Where the ? is the COM port number that your pole display is connected to: i.e. 1,2,3 or 4)

3. After you have added the lines, go to **FILE**, arrow down to **SAVE**, then press **<ENTER>**.
5. **RESTART** the computer. Go to **START, SHUT DOWN**, and **RESTART**.

### PARALLEL INTERFACE

1. Make note of the **PARALLEL PORT** that the pole display is attached to.

## Testing the Pole Display

1. From the **MS-DOS PROMPT**, **C:\**, type the following:

**CD\POWER**

Then press **<ENTER>**.

2. From the **C:\POWER** prompt, type the following:

**COPY CON HELLO**

Then press **<ENTER>**.

**HELLO**

Then press **<ENTER>**.

Then press **<F6>**, Then press **<ENTER>**.

One file will be copied.

3. Then type the following:

**TYPE HELLO>COM?:** (serial interface)

or

**TYPE HELLO>LPT?** (parallel interface)

(Where ? = the port the device is attached to)

The response should be "HELLO" across the screen of the pole display.



```
C:\> CD\POWER
C:\POWER> COPY CON HELLO

HELLO
^Z

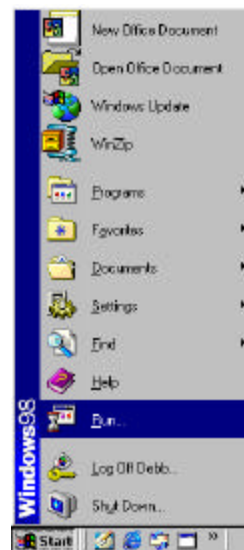
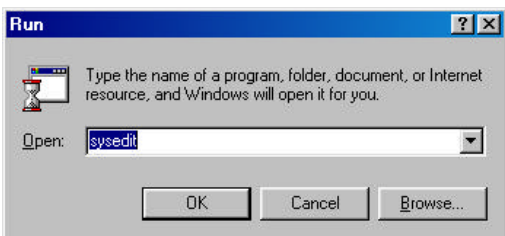
1 file(s) copied

C:\POWER> TYPE HELLO>COM?:
```

## Pole Display Windows 95/98 Operating System

### SERIAL INTERFACE:

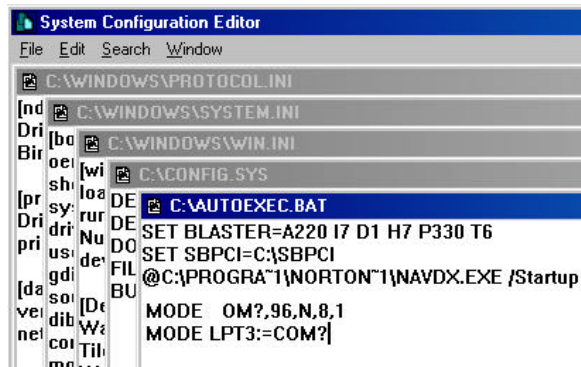
1. In Windows, go to **START**, and **RUN**.
2. Type in **SYSEEDIT**, and press **<ENTER>**.



3. Left click on **OK**, this will open the system configuration editor.
4. In the **AUTOEXEC.BAT** window, type the following statement:

**MODE COM?,96,N,8,1**  
 (Where the ? is the COM port number that your pole display is connected to: i.e. 1,2,3 or 4)

**MODE LPT3:=COM?**  
 (Where the ? is the COM port number that your pole display is connected to: i.e. 1,2,3 or 4)



4. After you have added the lines, go to **FILE**, arrow down to **SAVE**, then press **<ENTER>**.
5. **RESTART** the computer. Go to **START**, **SHUT DOWN**, and **RESTART**.



### PARALLEL INTERFACE:

1. Make note of the **PARALLEL PORT** that the pole display is attached to.

## Testing the Pole Display

1. Go to **START, PROGRAMS, MS-DOS PROMPT.**
2. From the **MS-DOS PROMPT, C:\WINDOWS,** type the following:

**CD\POWER**

Then press **<ENTER>**.

3. From the **C:\POWER** prompt, type the following:

**COPY CON HELLO**

Then press **<ENTER>**.

**HELLO**

Then press **<ENTER>**.

Then press **<F6>**, Then press **<ENTER>**.

One file will be copied.

4. Then type the following:

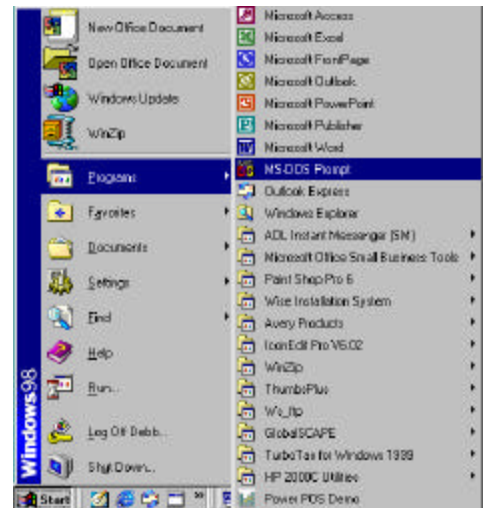
**TYPE HELLO>COM?:** (serial interface)

or

**TYPE HELLO>LPT?** (parallel interface)

(Where ? = the port the device is attached to)

The response should be "HELLO" across the screen of the pole display.



```
MS-DOS Prompt
Auto
Microsoft(R) Windows 98
(C)Copyright Microsoft Corp 1981-1999.
C:\WINDOWS> CD\POWER
C:\POWER> COPY CON HELLO

HELLO
^Z

1 file(s) copied

C:\POWER> TYPE HELLO>COM?:
```